

927 E 7th St Duluth

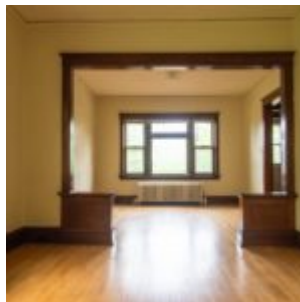
**\$900/mo + Electric, Gas, and Garbage –
Available October 1st!**

2 bedroom + 1 bathroom apartment in the Big Sur building near Portland Square. Built in 1915 the historic Big Sur building is a 4 unit apartment, two upper and two lower units. Each unit has its own private entrance providing peace of mind and minimal traffic in and out of the building. Inside enjoy a spacious living area and dining room. The kitchen features an electric range and more pantry and storage space you would ever need. Ugly, stained and hard to maintain carpet is a thing of the past at Big Sur, enjoy the beautiful, easy to clean, hardwoods that flow throughout this unit. Also included is one reserved off-street parking spot, a laundry facility on-site, and a storage unit in the basement.

Big Sur is situated in the East Hillside – Chester Park neighborhood. East Hillside is known for its proximity to the University of Minnesota Duluth, the College of St. Scholastica, the incredible Chester Park, and downtown Duluth. The neighborhood is made up of historic homes. In the area grab a bite to eat at restaurants like Burrito Union, Sara's Table, and Tavern on the Hill or get out and explore green spaces like the sprawling Chester Park and the quaint Portland Square.

For more information give us a call!

ShipRock Management
(218) 740-3800



ShipRock Management is an Equal Housing Opportunity company. For more information go to FHEO.

\$900/mo

(+ Electric, Gas & Garbage)

- 2 BR
- Laundry
- Off Street Parking

Shiprock Management, Inc.
128 West First Street
Duluth, MN 55802
(218) 740-3800

Shiprock Management is an Equal Housing Opportunity company.

For more information, please visit the FHEO