

1306 10th Street North St. Cloud

\$950/mo + All Utilities(except sewer) –
Available August 15th!

Welcome to your new home in the heart of St. Cloud! This one side of a duplex is located near St. Cloud Hospital, Coborn's and much more! Looking for storage? The unfinished basement of this duplex has a great amount of storage for your needs. Act now for this spectacular home sweet home that will be ready for the new year!

- 2 Bedroom
- 1 Bath
- 875 Square Feet
- Newer Kitchen Cabinets
- White Appliances
- Washer/Dryer in Unit
- Unfinished Basement with Plenty of Storage
- Off Street Parking
- Located close to St. Cloud Hospital, Coborns, and Madison Elementary School

Pets are welcome within our guidelines!

We'll take out the trash – Our Garbage policy is simple. Each month \$10 per adult and \$5 per child is added to your rent to pay for garbage. This means one less utility account to setup and one less step to get into your new place.

Masks are required at all showings.

For more information or to schedule a showing give us a call!
ShipRock Management



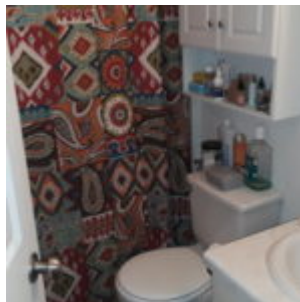
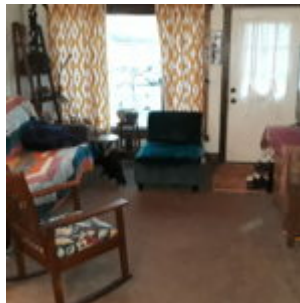
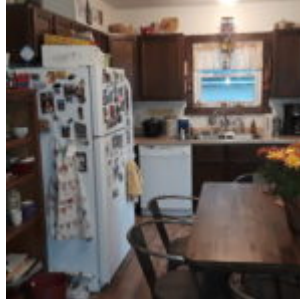
(218) 740-3800

ShipRock Management is an Equal Housing Opportunity company. For more information go to FHEO.

\$950/mo

(+ Electric, Gas & Garbage)

- 2 BR
- Pet Friendly
- Laundry
- Off Street Parking



Shiprock Management, Inc.
128 West First Street
Duluth, MN 55802
(218) 740-3800

Shiprock Management is an Equal Housing Opportunity company.

For more information, please visit the FHEO