



847 Driftwood Drive St. Cloud



2 Bedroom + 1 Bath Driftwood Plaza apartment. Driftwood Plaza is located in the Westwood neighborhood of Saint Cloud. Nearby you will find Crossroads Shopping Center, Westwood Elementary School, Apollo Senior High School and many public parks and restaurants. Each apartment offers a great living area with approximately 840 sq feet total space, a dishwasher, large closets, and a balcony or patio! Outside you will find a great green space to enjoy in the warm summer months as well as off street parking. On site laundry in the building!

Garage parking available.

Pet welcome within our guidelines.

Note: pictures are not of the exact unit but very similar layout and design.

We'll take out the trash – Our Garbage policy is simple. Each month \$10 per adult and \$5 per child is added to your rent to pay for garbage. This means one less utility account to setup and one less step to get into your new place.

Masks are required at all showings.

For more information or to schedule a showing give us a call!
ShipRock Management
(320) 253-4598



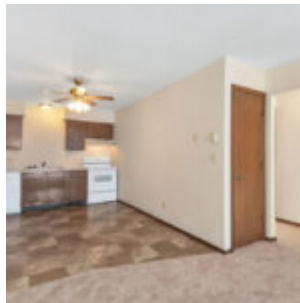
ShipRock Management is an Equal Housing Opportunity company. For more information go to FHEO.



\$720/mo

(+ Electric (heat) + Garbage)

- 2 BR
- Pet Friendly
- Garage Parking
- Laundry
- Off Street Parking



Shiprock Management, Inc.
128 West First Street
Duluth, MN 55802
(218) 740-3800

Shiprock Management is an Equal Housing Opportunity company.
For more information, please visit the FHEO